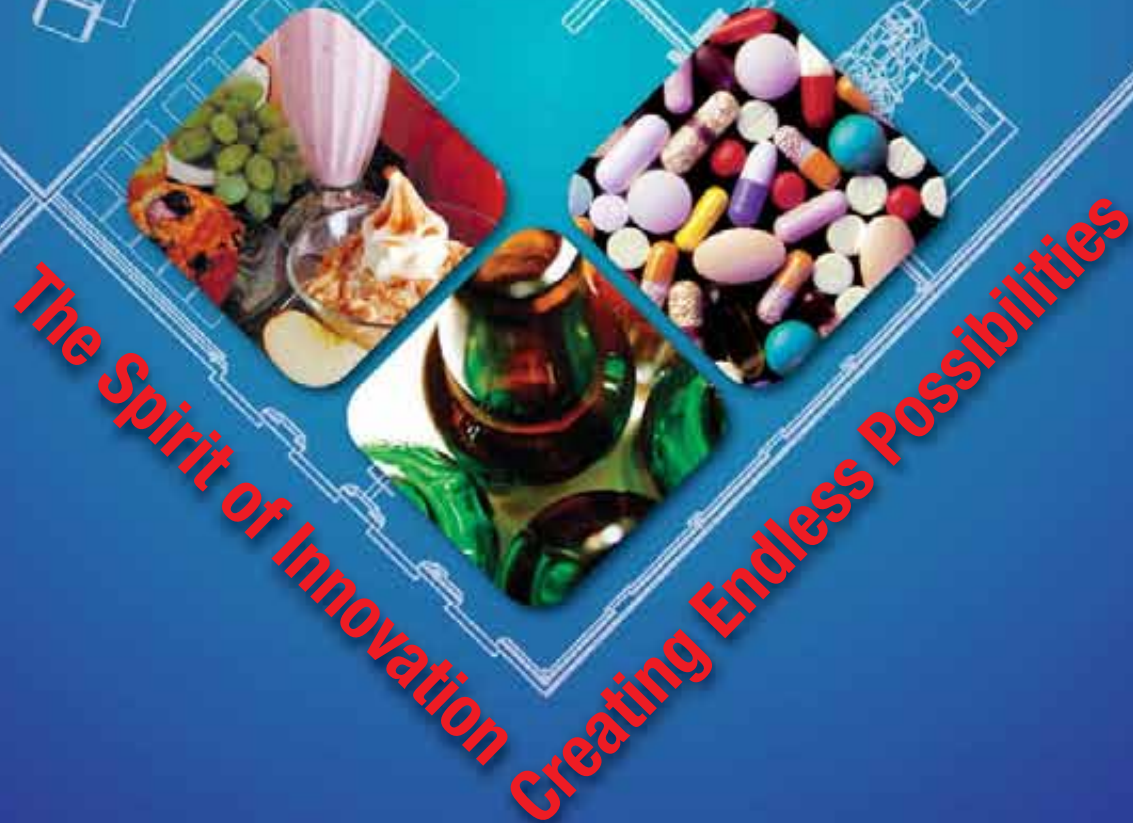


TRI-MACH



Services Integration Providers (S.I.P.)

- Project Management • Design Engineering • Equipment Manufacturing
- Turnkey Plant Relocations • Productivity Improvements

Our Mission



To create an **IMPACT** with our clients by striving to be the recognized leading **Services Integration Provider** for production facility enhancements within the Food, Personal Care, and Bottling Industries.

To remain committed to the core values of HACCP and GMPs, while delivering value and innovation to our customers.

“Tri-Mach raised the bar for contractor compliance regarding food safety”
A satisfied customer in Ontario

Our Values

I Integrity
Carry out all tasks with complete dedication to excellence and food safety.

M Motivate
Encourage our people to explore new practices and technology to foster innovation and maintain a competitive edge.

P Professionalism
Uphold the highest standards of quality in everything we do.

A Attitude
Maintain a positive approach demonstrating respect and fairness towards our associates, clients, the environment, and community.

C Commitment
We are dedicated to delivering maximum value and responsive service to our clients.

T Teamwork
Work in partnership with our customers to achieve the highest level of success.





Food Safety

Tri-Mach is a **Services Integration Provider (S.I.P.)**, specializing in facility enhancements where consumer foods and products are made. Food Safety is an integral part of our procedures and policies, and is reviewed on a regular basis to ensure compliance with the latest Food Safety directives.

Tri-Mach employees' work habits comply with the HACCP principles and GMP guidelines. You can be confident that our employees will treat your facility with respect.

Our highest priorities while working at your plant are to minimize food safety risks and maximize personal health and safety.



Our Markets

Our experience is drawn from years of application knowledge, gained from learning about our customers' requirements and applying tailor-made solutions that work.

Food

Among our customers are many leading meat, poultry and prepared food companies, as well as processed fruit and vegetable producers, bakeries, confection and cold storage companies.

Bottling

Our beverage industry clientele includes bottlers of soft drinks, beer and condiments.

Personal Health

In the Personal Health Care industry we have developed many solutions for companies that manufacture pharmaceuticals, personal care products and vitamins.



Services Integration Provider (S.I.P.)



Part of Your Team

As a Services Integration Provider, we are highly involved in your project from initial design to completion.

Flexible

Tri-Mach is pleased to work in tandem with your engineering groups or independently as the primary solution provider. When it comes to choosing process and packaging machinery, you can select from our trusted leading brands or from your own preferred systems.

Project Coordination

Our trusted team of professionals works closely together to complete your project on time and on budget while maintaining the highest standards.

Working with Tri-Mach will give you more time to concentrate on your day-to-day business. Whether expanding your plant, modifying your production lines, or using our maintenance services, you'll see that we have the experience and expertise to get the job done properly.



We Put Your Priorities First

We make every effort to provide a clean and seamless experience from design to completed project. Our solutions are created for you by technical professionals, all experts in their individual disciplines. Tri-Mach gives you peace of mind and a finished product engineered to comply with the latest Food Safety Directives and Prestart Health and Safety Regulations.

We specialize in:

- Turnkey plant builds
- New machinery installation and machinery relocations
- Packaging and Process line enhancements
- Process piping
- Preventative Maintenance and Maintenance Coverage
- Sales and service of food process and packaging machinery
- Line layouts
- Conveyor and product handling systems
- Stainless steel manufacturing





Plant Operational Maintenance

Emergency Call-Out Service: 1-877-TRI-MACH

- Available 24 hours/day - 365 days per year
- Call us when a line stoppage occurs due to a machinery or services problem
- Tri-Mach can dispatch one person or a team of skilled professionals to trouble-shoot and resolve breakdowns in your production facility

General Maintenance Coverage

- A highly skilled Tri-Mach person compliments your maintenance department
- Provided during times when extra assistance is needed such as filling in for vacations or when short staffed
- Tri-Mach people have experience on many types and brands of processing and packaging machinery

Preventative Maintenance on Machinery

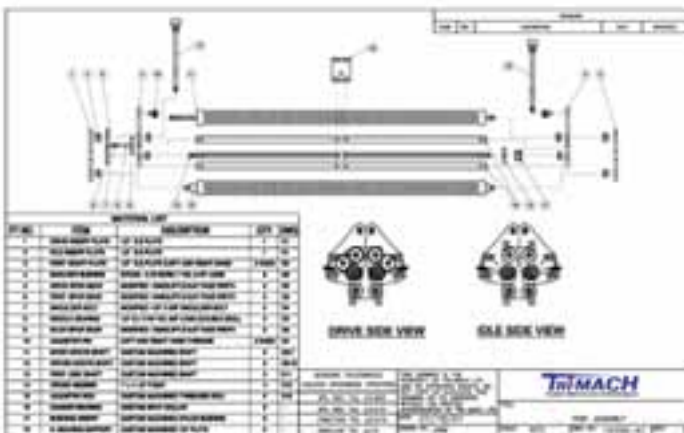
- Production Line and Facility Maintenance within Food, Personal Health Care and Beverage Industries
- Scheduled maintenance in accordance with facility guidelines or machinery manufacturer's guidelines
- Repairs, Retooling and Production Change-overs





Design Engineering and Custom Manufacture

- Custom design of single components or complete line layouts using the latest Auto Desk Inventor Technology
- Produced to CFIA, USDA and AMI regulatory standards
- In-House Manufacturing Capabilities
- Equipment Refurbishment
- Custom Stainless Steel Production Line Components
- Conveyor Systems
- Product Handling Solutions
- Scale Platforms
- Transfer Devices
- Ancillary Production Line Items
- Specialized Machining





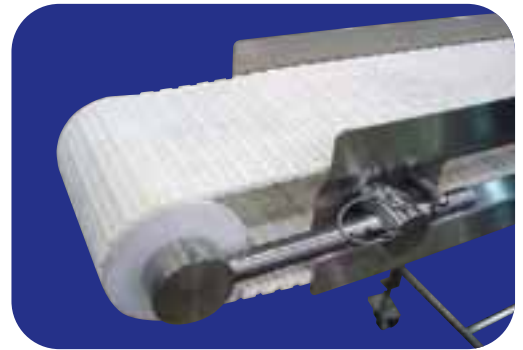
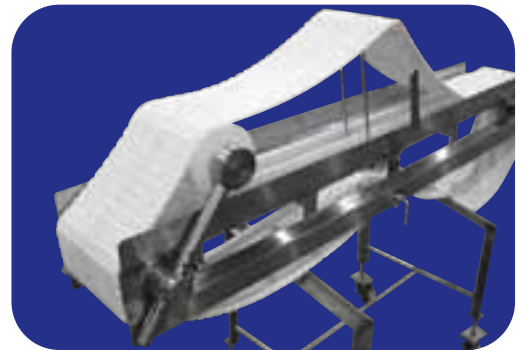
Ever-Kleen™ Conveyor

Features

- Construction Laser Cut and /or Angular Stainless Steel Construction
- Tool-less conveyor removal and replacement
- Conveyor belt can be replaced in a few minutes
- No harbourage points for bacteria growth
- Wash through / Hose through frame
- Conveyor wear strips lift out for cleaning
- Available in a standard range of lengths and widths in straight sections, inclined or radius
- 120 / 240 / 480 / 600 motor voltages
- Fixed or variable speed - AC Inverter or DC Drive Controls
- Nema 4X or Nema 12 Control Panels
- Conveyor Lift bar allows belt to be run while being cleaned and sanitized

Benefits

- Great Value - Environmentally Friendly
- Suitable for Intralox™ or other modular conveyor belt systems
- Reduced sanitation time allowing quick change over between products increasing line efficiency
- Easy to clean reduces sanitation labour and material costs
- Tool-less belt removal - saves time on cleaning
- Sanitary construction without bug traps - for better compliance with HACCP, GMP and Food Safety Practices





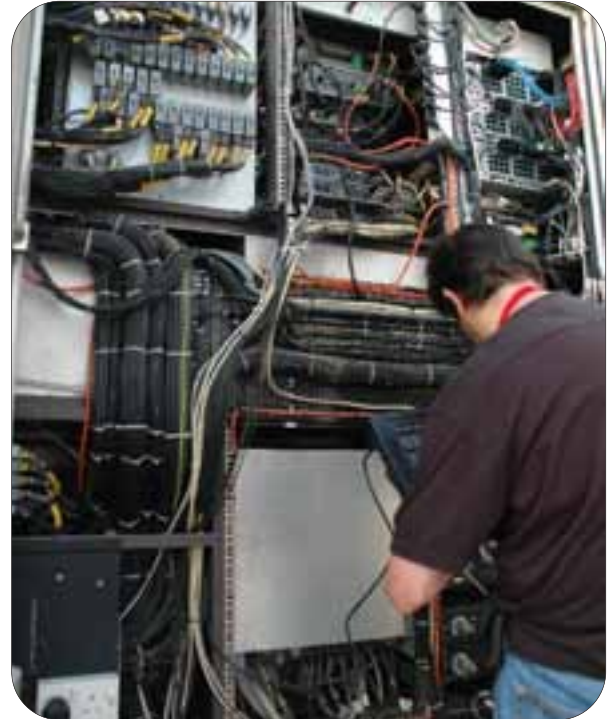
Electrical Services

We Specialize In:

- Panel Engineering and Design
- Drives, Control Systems, and Automation
- New or In-Plant Installation of Electrical Services
- PLC Programming
- Troubleshooting
- Specializing in Food, Personal Health, and Beverage Industries
- All Work Completed to CFIA and ESA Standards

Included with Tri-Mach Electrical Services:

- Electrical Safety Authority Inspection
- Vehicles are Complete Mobile Workstations
- No Surcharges for Tools or Consumable Work Materials
- No Truck Usage Fees
- No Surcharges for Foreman Supervision



We Specialize In:

- Food, Personal Health Care and Beverage Industries
- Turnkey Solutions with Multiple Trades Under One Roof
- Complete Plant and Machinery Relocations
- One Source of Responsibility
- Assembly and Installation of Processing and Packaging Machinery
- Production Line Modifications
- Rebuild and Enhance Packaging and Process Lines
- Water, Pneumatic, Sanitation, Vacuum Line Installation
- Process Piping
- On-Site Repairs and Emergency Service
- Tools and Workplace Maintained in a Sanitary Clean Condition
- All Work Completed to CFIA and USDA Food Safety Standards



Included with Tri-Mach Millwright Services:

- Tri-Mach Service Vehicles are Complete Mobile Workstations
- No Surcharges for Tools or Consumable Work Materials
- No Truck Usage Fees
- No Surcharges for Foreman Supervision



The Tri-Mach Story

Conveying Innovative Turnkey Solutions Since 1985

Tri-Mach has provided technical services to the food industry since 1985. Our innovations and creative solutions have been applied to an ever-growing group of Food, Beverage and Personal Health Care companies around the world.

Conveniently located in Canada's food processing corridor of southwestern Ontario, with many technical disciplines under one roof, Tri-Mach is recognized as a leading Services Integration Provider (S.I.P.).

Services Integration Provider (S.I.P.)

At Tri-Mach, we set ourselves apart from the rest by offering excellence in custom engineering, full stainless manufacturing, and multi-trade services such as electrical, mechanical, millwrighting and process piping all under one roof. We have a thorough knowledge of HACCP guidelines and ensure that our employees are continually trained with Good Manufacturing Practices.



Tri-Mach Group Inc.
315 Breithaupt Street, Kitchener, Ontario N2H 5H6
Ph: 519-744-6565 Toll-Free: 1-877-TRI-MACH
Fax: 519-744-6829 • www.tri-mach.com
E-mail: customerservice@tri-mach.com